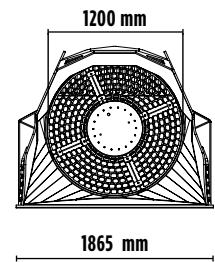
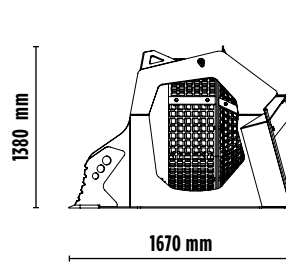
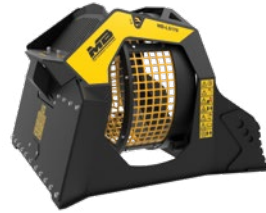
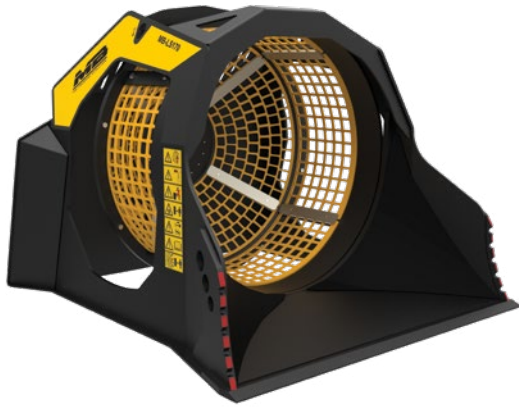


MB-LS170 S2


MB
THE CRUSHING EVOLUTION



ACCESSORIES

- RECOMMENDED SPARE PARTS KIT
- FIXED COUPLING
- HOUR METER
- 24 MONTHS WARRANTY

SPECIFICATIONS

| | |
|-----------------------------|--|
| EQUIPMENT |  ≥ 6,5 < 15 Ton |
| LOAD CAPACITY | 1,10 m ³ |
| GRID DIAMETER | 1200 mm |
| DIMENSIONS | 1670 x 1865 H 1380 mm |
| OIL FLOW | 80 l/min. |
| PRESSURE COUNTER PRESSURE | > 160 < 40 bar |
| WEIGHT | 1,45 Ton |



AREAS OF APPLICATION



RECYCLING



MEDIUM-SCALE
RESIDENTIAL
WORKSITES



SMALL-SCALE
COMMERCIAL
WORKSITES



DEMOLITION

The data provided above is not binding, as the manufacturer reserves itself the right to make improvements to its products at any time and with no advance notice. References to excavator weights are approximate and many may be subject to changes.

Rev. 2020 / 07

in f t You Tube YOU IG

WWW.MBCRUSHER.COM